

BREEZE 4WD

ROBOTIC POOL CLEANER
SETTINGS AND TROUBLESHOOTING GUIDE

PLEASE READ CAREFULLY BEFORE
USING YOUR POOL CLEANER

PRODUCT SETTINGS and TROUBLESHOOTING



WARNING: Do not turn the Power Supply on, unless the pool cleaner is in the water.

WARNING: Do not operate your machine while people swim in the pool.

WARNING: The Power Supply must be placed at least 12 feet / 4 meters from the pool's edge at all times! See diagram below.

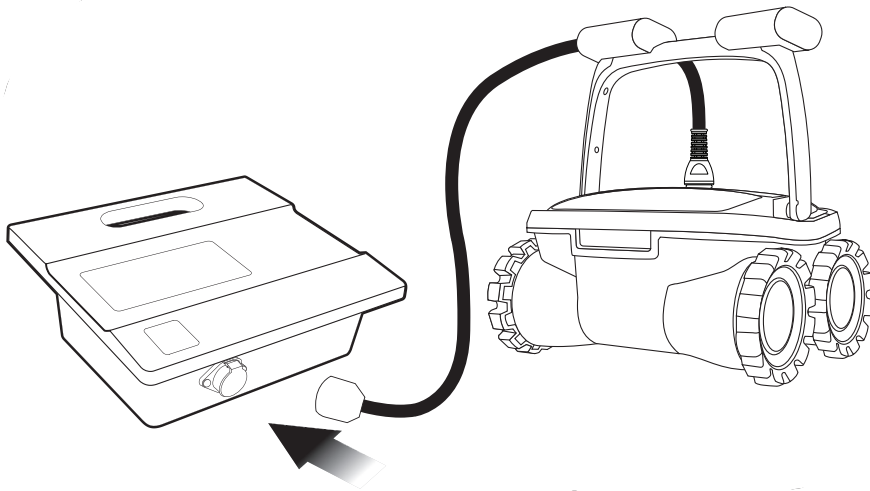
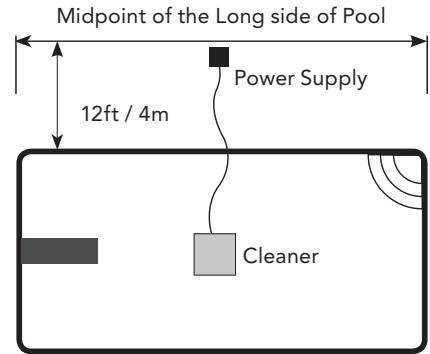
WARNING: To prevent possible electric shock hazard this unit must be connected to an RCD (Residual Current Device) with a related residual operating current not exceeding 30mA.

WARNING: Before performing any troubleshooting maintenance procedures, your Cleaner should be disconnected from the Power Supply (transformer) and the Power Supply should be unplugged from the electrical outlet to prevent the possibility of personal injury or damage to your Cleaner!

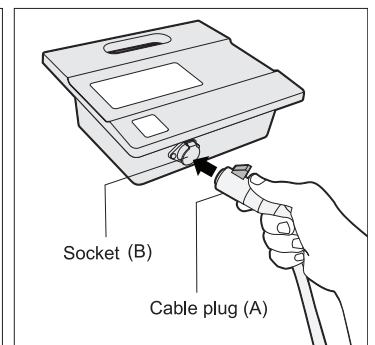
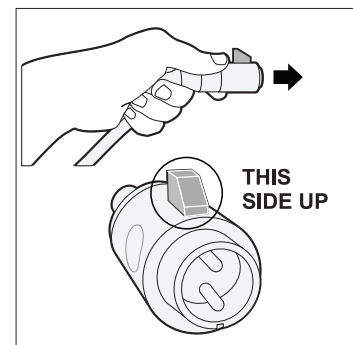
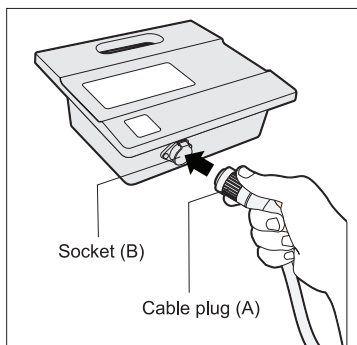
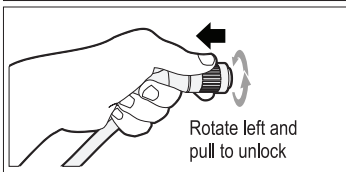
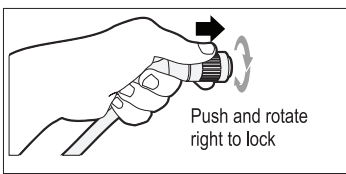
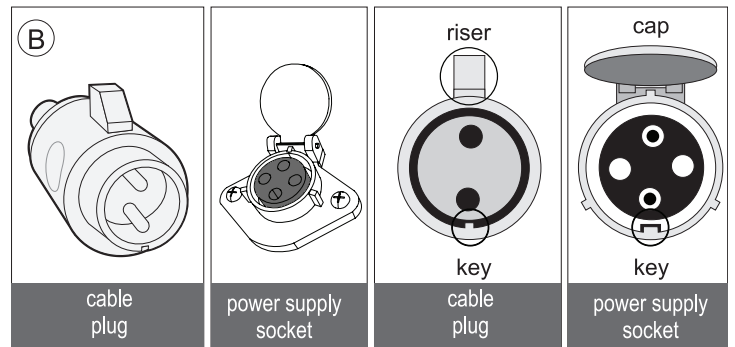
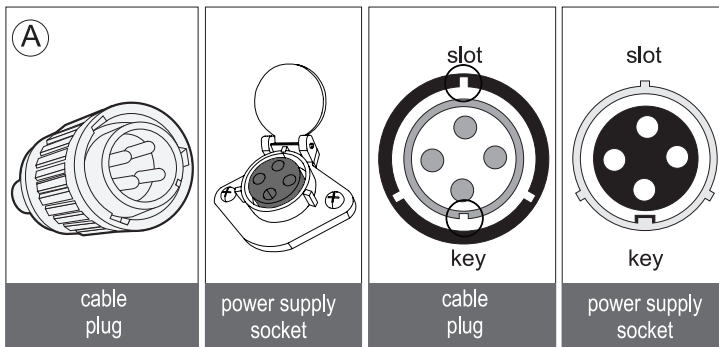
PRODUCT SETTINGS

POWER SUPPLY

Setting up the power supply is simple. First, make sure that the power supply is plugged into a GFCI (Ground Fault Circuit Interrupter) outlet. Then lift the cover on the power supply outlet and connect plug into the power supply and the cleaner will start working immediately.



Please look for the connection plug is similar to either diagram (A) or (B) below.



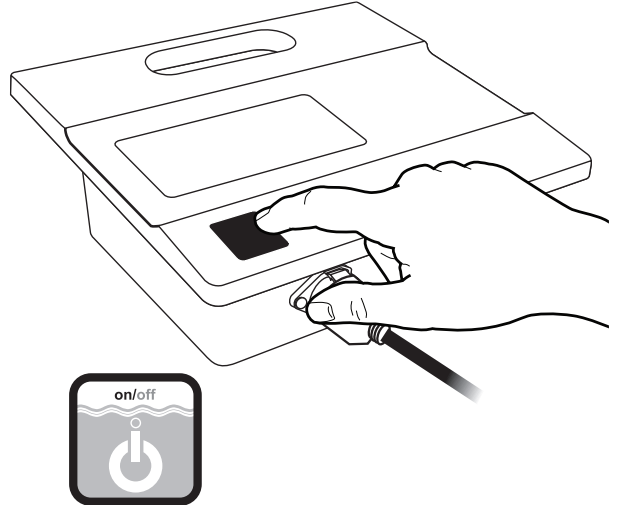
PRODUCT SETTINGS and TROUBLESHOOTING

PRODUCT SETTINGS

TIMER SETTINGS / POOL SIZE

The pool cleaner will start working as soon as the power supply is plugged into the wall outlet and the floating cable is plugged into the power supply socket. The indicator light on the power supply lights up to confirm that the cleaner is working.

- To turn the power supply **OFF** while the cleaner is running it's cycle, press and release the power **ON/OFF button**. The indicator light will turn off.
- Once the cleaner has finished its cleaning cycle, it will enter a "stand-by" mode where the indicator light will start blinking. To restart the cleaning cycle press and release the **ON/OFF button**. Should you wish to completely turn the power supply off, unplug the power cord from the wall outlet, then unplug the floating cable from the power supply.



PORT EXTENSIONS

Your cleaner is equipped with two adjustable suction ports on the underside of the unit. Both can be lowered to maximize the suction strength for picking up smaller debris. The suction ports are set to the lowest position by default.

To adjust the ports, use your hand to pull or push the extensions into place. When you hear a click sound, this means the extension is locked into position and ready. To change again, repeat the same action. (See Figure A to the right)

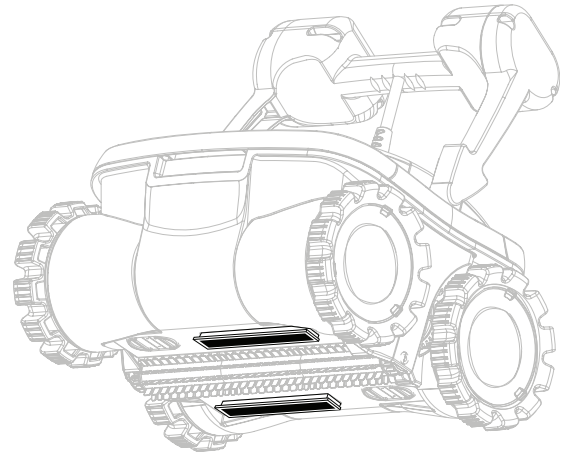
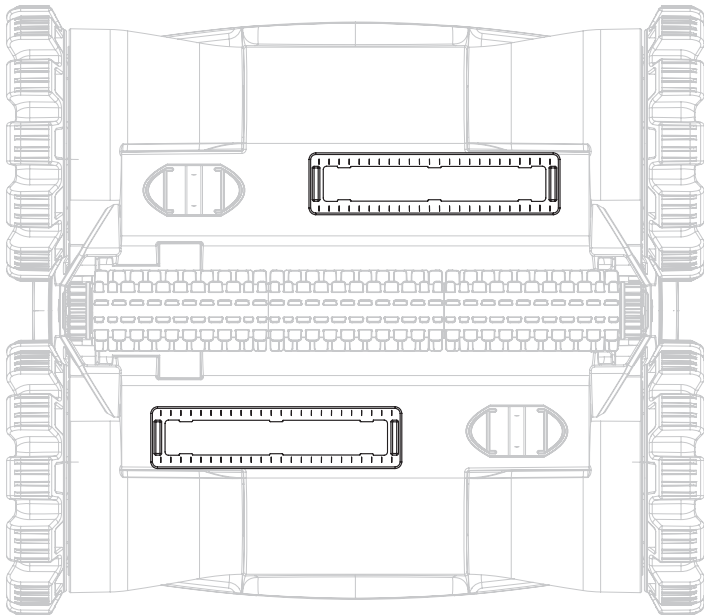
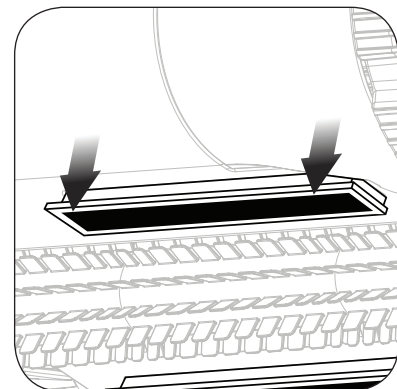


Figure A



PRODUCT SETTINGS and TROUBLESHOOTING

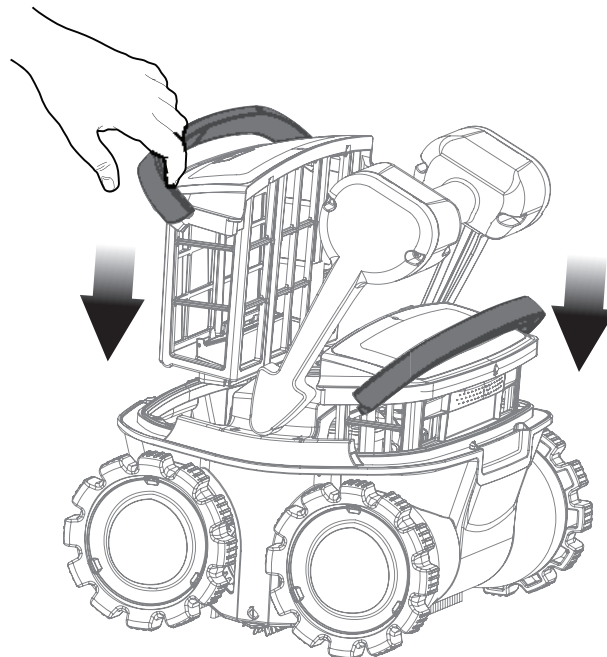
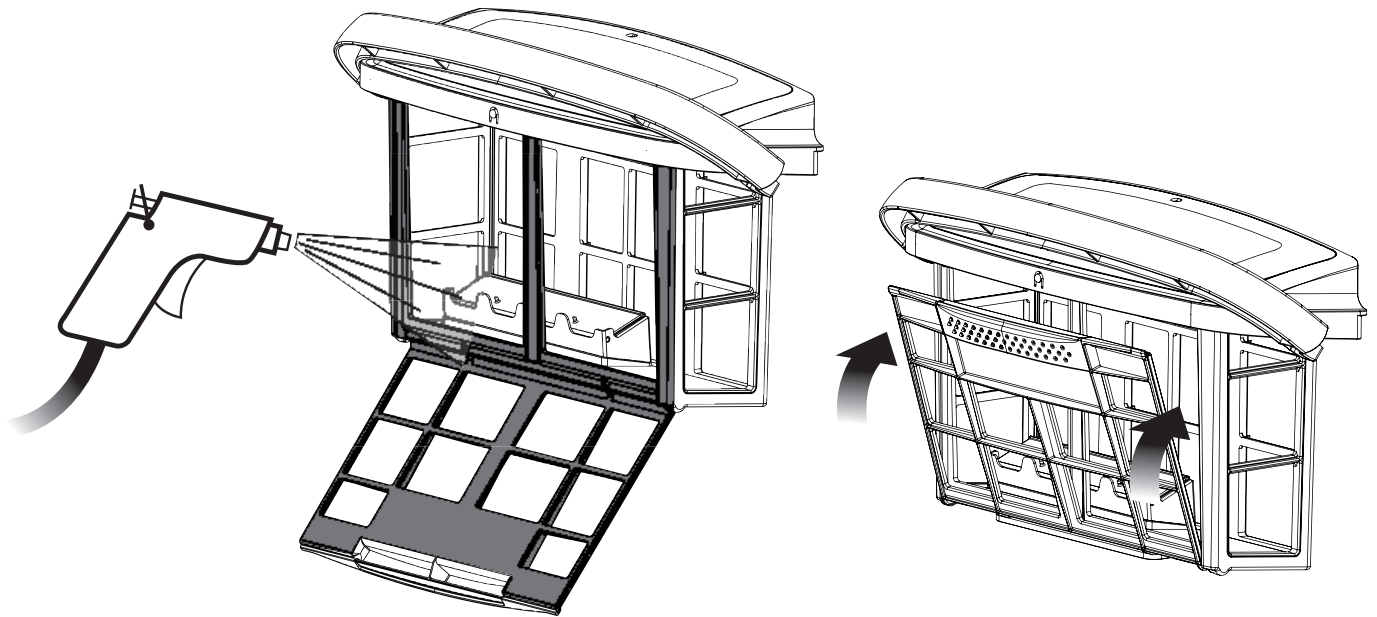
PRODUCT SETTINGS

RE-INSTALLING FILTER BASKETS AFTER CLEANING

After you have cleaned the filter baskets of the collected debris, you'll need to re-install them back into the cleaner. Make sure the channels on the basket are clear of any debris or they won't close completely.

Carefully slide them back into the cleaner so they are secure.

NOTE: This filter media MAY NOT be put into any washing machine or dryer. Make sure you rinse off any leaves, twigs and larger debris before re-installing.



PRODUCT SETTINGS and TROUBLESHOOTING

ROTATING SCRUBBING BRUSH

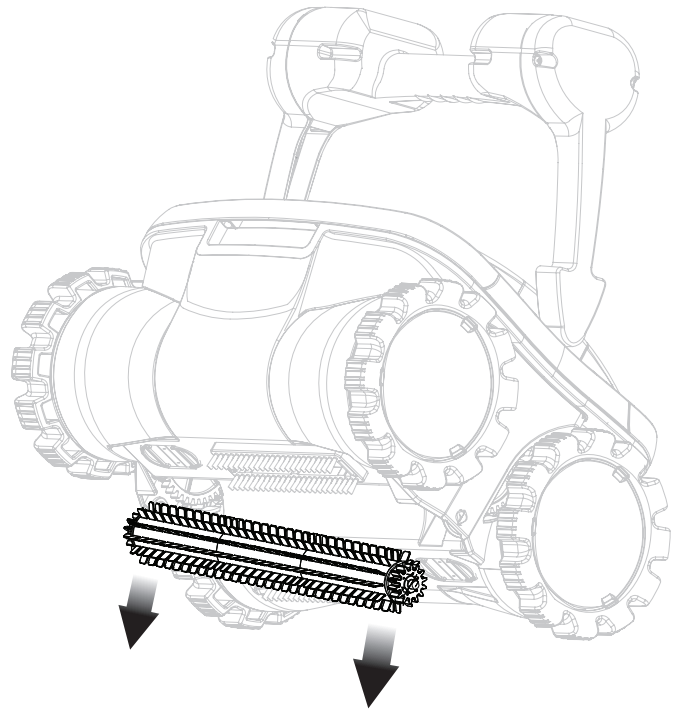
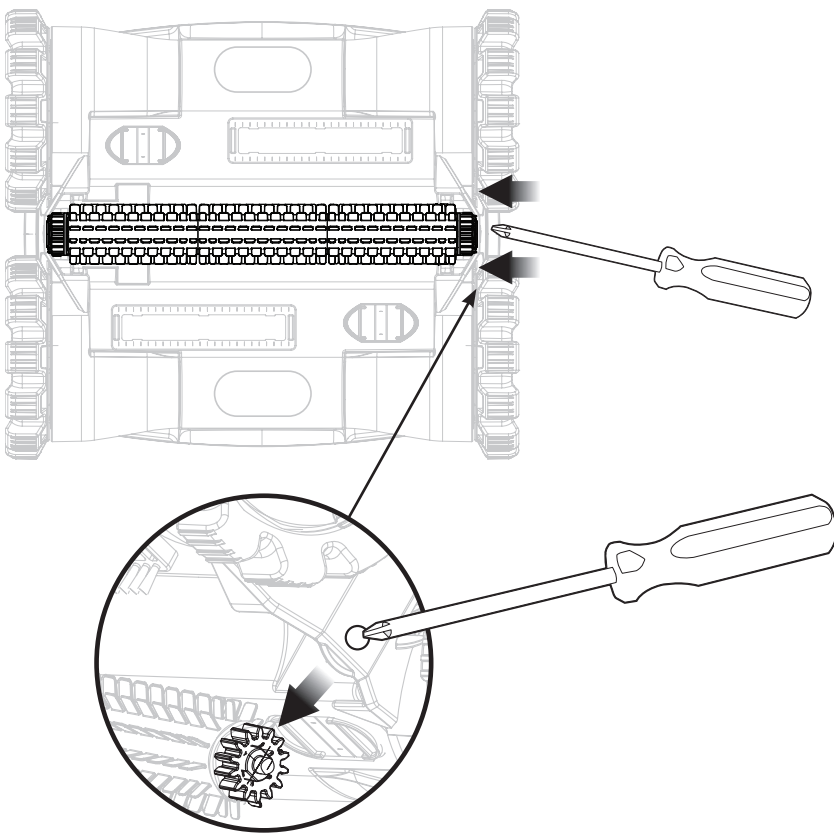
This model comes complete with a rotating scrubbing brush located underneath the cleaner. This brush is a moving part and is powered by your cleaner. It is meant to pass over surfaces and scrub as an additional complimentary cleaning method.

This brush is may be removed for easy maintenance. This section shows you the location and how to remove the brush.

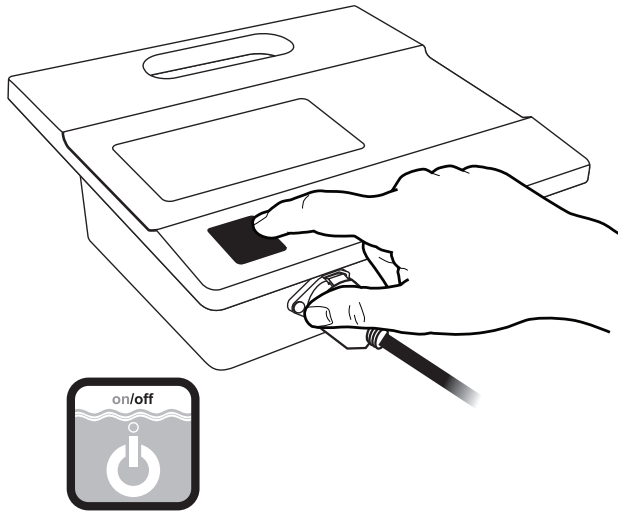
- 1 Using a screwdriver, press the small spring button on one side of the cleaner located near the bottom part of the unit (See close-up). It is easier to push one side out, then the other.

- 2 Using a screwdriver, press the second small spring button on the opposite side of the cleaner. You should be able to remove the brush from the cleaner now. You will now be able to clean the brush as well as have access to any hard to reach areas of the cleaner for maintenance.

(Underneath view of cleaner)



PRODUCT SETTINGS and TROUBLESHOOTING



WARNING: Do not turn the Power Supply on, unless the pool cleaner is in the water.

WARNING: Do not operate your machine while people swim in the pool.

WARNING: The Power Supply must be placed at least 12 feet / 4 meters from the pool's edge at all times! See diagram below.

WARNING: To prevent possible electric shock hazard this unit must be connected to an RCD (Residual Current Device) with a related residual operating current not exceeding 30mA.

WARNING: Before performing any troubleshooting maintenance procedures, your Cleaner should be disconnected from the Power Supply (transformer) and the Power Supply should be unplugged from the electrical outlet to prevent the possibility of personal injury or damage to your Cleaner!

DESCRIPTIVE TROUBLESHOOTING

ISSUE	RECOMMENDED SOLUTION
Moves slowly or doesn't seem to be vacuuming	<ul style="list-style-type: none"> • This is the most common question. The solution is to make sure that the filter basket is thoroughly clean • Check to see that the suction ports are not clogged or blocked
LED light is blinking on the power supply	<ul style="list-style-type: none"> • Indicates the end of the cleaning cycle • Check to see if the propeller is stuck • To restart, press the power button once. Cleaning program will resume.
My unit is not sucking up debris	<ul style="list-style-type: none"> • Check to see that you've properly set-up the unit and power supply • Check to see if the propeller is stuck
Unit is stuck in the middle of the pool but the unit still pumps out water	<ul style="list-style-type: none"> • Check to see that there is nothing obstructing the cleaner or that the cleaner is not stuck on any loose objects in the pool.
Propeller seems to be clogged	<ul style="list-style-type: none"> • This will entail cleaning out the propeller. Make sure the cleaner is unplugged from the power supply and that the power supply is OFF and unplugged from the outlet as well. Simply remove the top part by the filter baskets. You will notice 1 screw that holds the plate that covers the propeller. Using a Phillips head screw driver, remove the screw and then remove the plate. Clear out the propeller and reinstall the plate and screws.

This guide provides descriptive troubleshooting for this unit.
Should you need help with an issue that is not described in this manual, please the number below.

CALL CUSTOMER SERVICE AT 800-221-1750

You may also download the Quick Start Guide as well as the Settings and Troubleshooting Manual at: www.Aquabot.com

aquabot
KEEPERS OF PURE

Aqua Products, Inc
282 Grove Avenue
Cedar Grove, NJ 07009
United States

2
Year

2
Year

aquabot
KEEPERS OF PURE

WARRANTY
TWO-YEAR LIMITED WARRANTY
(One-Year Bumper-to-Bumper Coverage)

Subject to the terms and conditions of this Warranty, Aqua Products, Inc. warrants to the consumer who is the initial purchaser of this unit ("you") that such unit will be free from defects in workmanship and materials under normal use and conditions (as described below) for (a) a period of one (1) year from the original date of purchase (the "Initial Coverage Term") with respect to all parts of such unit and (b), after the conclusion of the Initial Coverage Term, a period of one (1) year (the "Additional Coverage Term") with respect to the power supply, pump and motor for such unit. **For this unit to be covered by this Warranty, the Warranty Registration Card accompanying this Warranty must be mailed to Aqua Products at the address provided below no later than ten (10) days after your purchase of this unit (the "Purchase Date"), along with an original or a copy of the receipt or sales slip demonstrating such purchase and the Purchase Date.**

Warranty: This Warranty covers: (a), during the Initial Coverage Term, all parts of this unit, including power supplies, pumps, motors, electrical cables, brushes, treads, belts, bushings, handles, enclosures, bags, wheels, remote controls and other components; (b), during the Additional Coverage Term, the power supply, pump and motor of this unit; and (c), throughout the period this Warranty is in effect, defects in workmanship or materials with respect to the then-covered parts under normal conditions and normal use, with such use (i) in compliance with the Operator's Manual (including without limitation the preventative maintenance described in such Manual) and (ii) in private residential pools in the United States of America. Each defect or failure of this unit or any parts of it due to commercial use, unauthorized modification, misuse, abuse, neglect, acts of God (such as an earthquake) or accident is excluded from this Warranty. Furthermore, Aqua Products recommends (but does not require) that maintenance or repairs be performed only by Aqua Products or an Aqua Products Authorized Service Center ("Authorized Service Center"), as improper or incorrectly performed maintenance or repairs (including without limitation the use of defective parts) voids this Warranty.

For each part determined by Aqua Products to be defective or to have failed under such use and conditions within the Initial Coverage Term or the Additional Coverage Term, as applicable, Aqua Products will, at its option, repair or replace such part at no expense to you (provided, however, that you will be responsible for all shipping or transportation costs in connection with transporting this unit to and from Aqua Products or an Authorized Service Center). In the event of such defect or failure of any such part, the foregoing will be your exclusive remedy.

Limitations: This Warranty is in lieu of all other express warranties, obligations or liabilities. ALL IMPLIED WARRANTIES, OBLIGATIONS OR LIABILITIES INCLUDING, BUT NOT LIMITED TO, EACH IMPLIED WARRANTY OF MERCHANTABILITY, SHALL BE LIMITED IN DURATION TO EITHER ONE (1) YEAR FROM THE PURCHASE DATE OR TWO (2) YEARS FROM THE PURCHASE DATE, AS PROVIDED IN THIS WARRANTY. EACH ACTION FOR BREACH OF WARRANTY HEREUNDER, INCLUDING, BUT NOT LIMITED TO, BREACH OF AN IMPLIED WARRANTY OF MERCHANTABILITY, MUST BE BROUGHT WITHIN A PERIOD OF EIGHTEEN (18) MONTHS FROM THE PURCHASE DATE WITH RESPECT TO THE INITIAL COVERAGE TERM AND THIRTY (30) MONTHS FROM THE PURCHASE DATE WITH RESPECT TO THE ADDITIONAL COVERAGE TERM. IN NO CASE SHALL AQUA PRODUCTS BE LIABLE FOR ANY OR ALL INCIDENTAL AND CONSEQUENTIAL DAMAGES FOR BREACH OF THIS OR ANY OTHER WARRANTY, EXPRESS OR IMPLIED. No agent, representative, dealer or employee of Aqua Products has the authority to increase or alter the obligations of this Warranty.

Some states do not allow limitations on how long an implied warranty lasts, so the above limitation may not apply to you. Some states do not allow the exclusion or limitation of incidental or consequential damages, so the above exclusion may not apply to you. This Warranty gives you specific legal rights, and you may also have other rights which vary from state to state.

Warranty Service: To obtain warranty service for this unit, please contact the Aqua Products Customer Service Department each time to receive a Return Authorization Number. NO WARRANTY SERVICE WILL BE PROVIDED WITHOUT A PRIOR RETURN AUTHORIZATION NUMBER FROM AQUA PRODUCTS, AS AQUA PRODUCTS WILL REFUSE WARRANTY CLAIMS WITHOUT SUCH NUMBER.

To schedule warranty service (and obtain a Return Authorization Number), review warranty coverage, inquire about technical service issues or ask other questions, contact the Aqua Products Customer Service Department by telephone (1-800-845-4856) or by e-mail (CustomerService@AquaProducts.com).

071112/2671911/3
820391
BK5002800/REV PA

Aqua Products, Inc., 282 Grove Ave., Cedar Grove, NJ 07009 • Tel: 1-800-845-4856